

Dekton® XGloss Stonika is synonymous with hyperrealism, better definition and depth and, most importantly, stays true to the same characteristics that make **Dekton® XGloss** a state-of-the-art ultra-compact surface.

Hyperrealist Design

Unlike other surfaces, the use of a thick vitreous layer is not necessary with Dekton® XGloss Stonika technology. Consequently, the image is not distorted and allows for greater clarity and realism of the designs.

Sublime Edges

Dekton® XGloss Stonika is conceived as a unique piece unlike other products where a glassy layer is distinguished.

Its surface layer is almost imperceptible due to the thickness. It's the thinnest in the market and it fuses perfectly with the base by creating a single more compact and resistant material.

Thermal and Scratch Resistance

Dekton® Stonika belongs to the Xgloss collection, so it keeps the same scratch properties as other polished colours.

Base and surface behave to temperature changes in the same way by avoiding common cracks due to the difference in expansion between the two elements.

Dekton® Stonika advantages

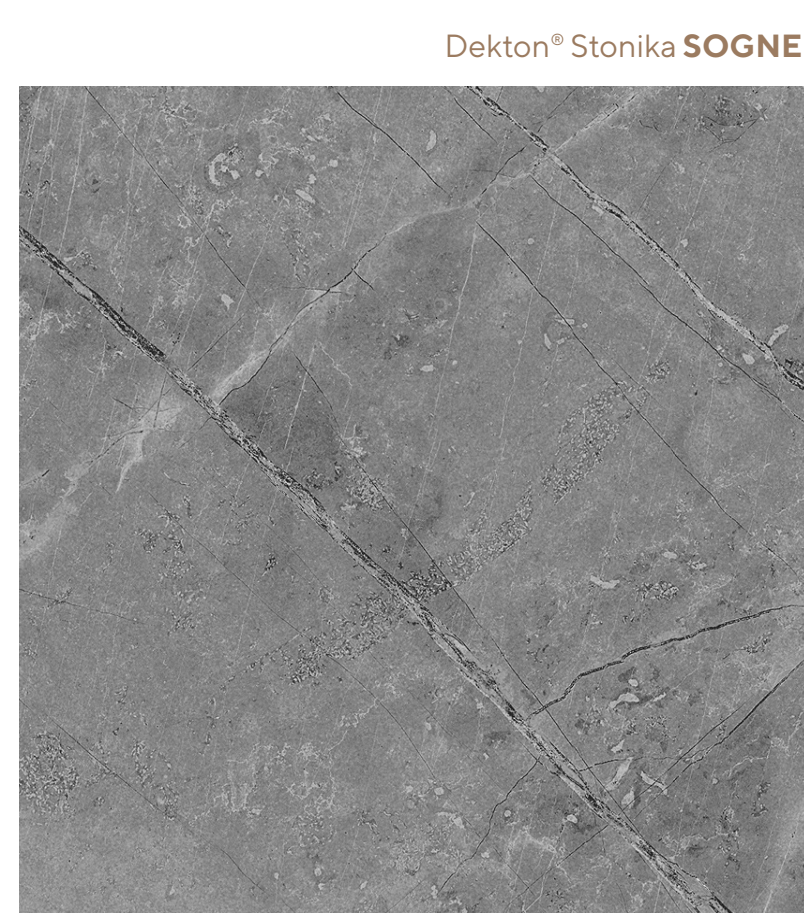
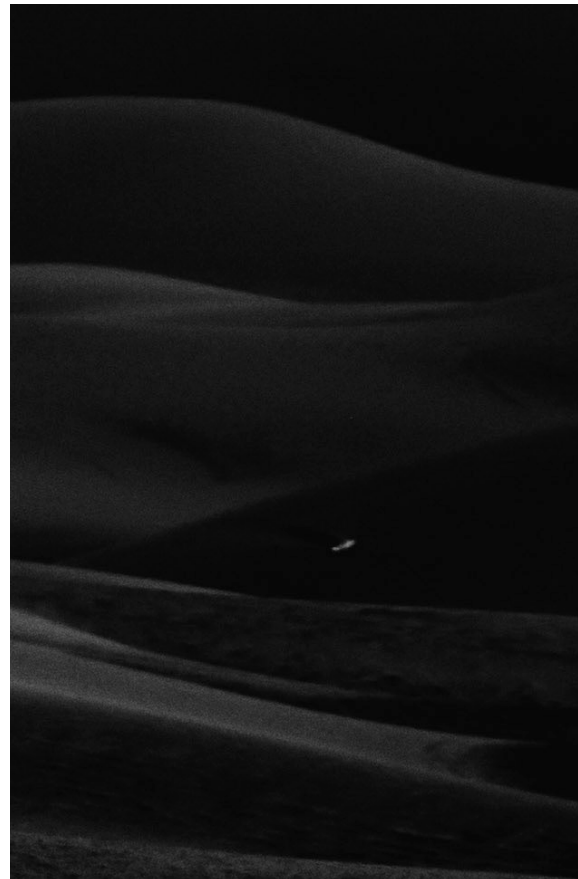
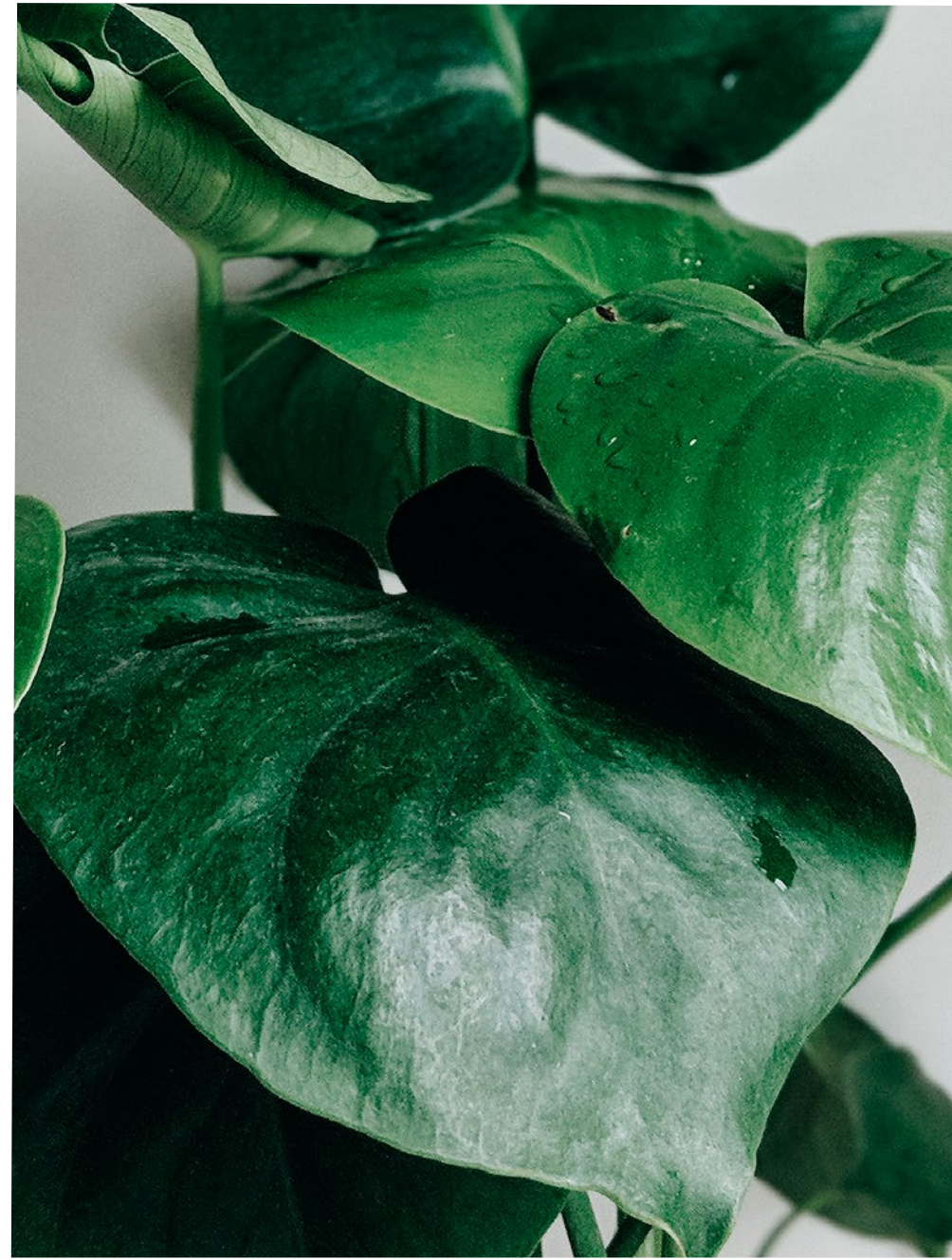


*Volume decoration in Taga and Arga colours

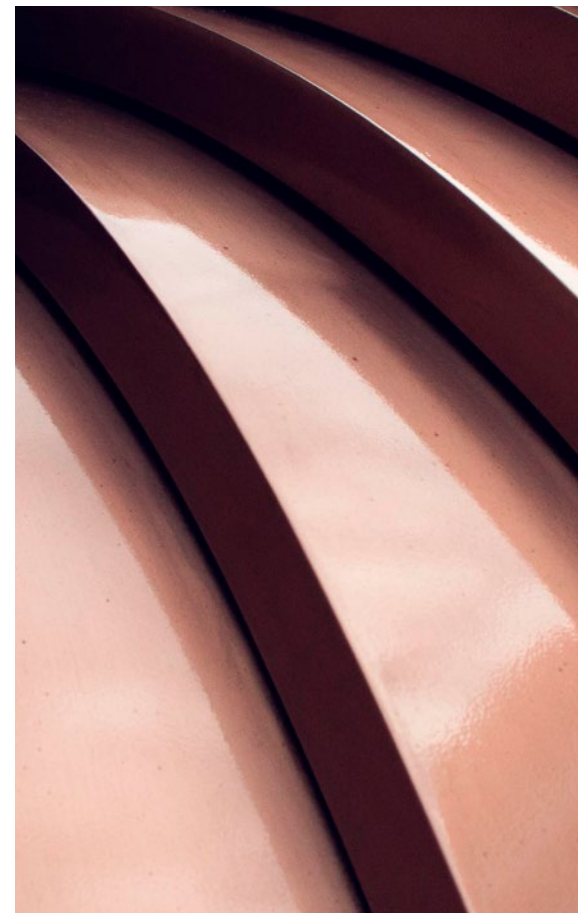
Dekton® Stonika
inspirational colour
moodboard



Dekton® Stonika **KORSO**



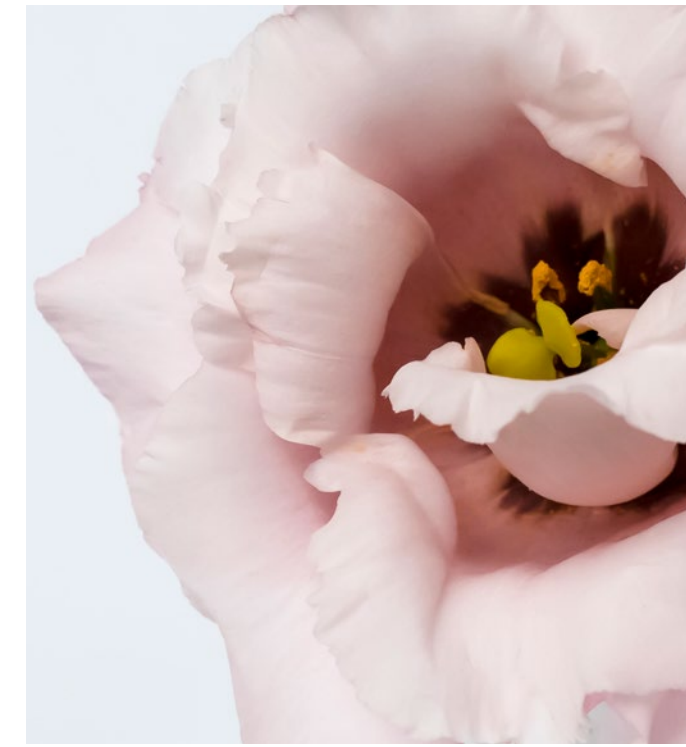
Dekton® Stonika **SOGNE**



Dekton® Stonika **TAGA**



Dekton® Stonika **OLIMPO**



Dekton® Stonika **BERGEN**



Dekton® Stonika **ARGA**





Dekton® Stonika Bergen is the focal point of any design decor. Combines perfectly with all metals and woods.

Styles
Industrial / Traditional / Modern



Dekton® Stonika

BERGEN

Dekton® Stonika Bergen channels the perfection of Portobello natural stone. Its intricate, sculptural structure is strengthened by its lustrous finish.



 Hyperrealist Design

*Copper taps
by Dornbracht*

*Mortar by Normann
Copenhagen*

*Le Cocktail Velvet Chair
by Oliver Bonas*

Dekton
Stonika
BERGEN

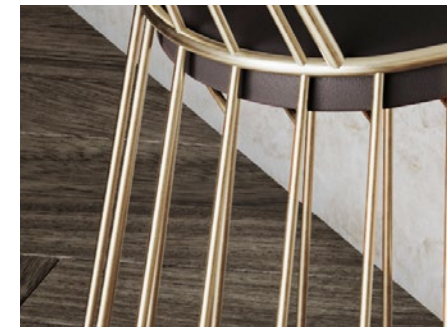


Dekton® Stonika

Norm Architects Watch

TAGA

Inspired by Taj Mahal quartzite, Dekton® Stonika Taga offers a modern interpretation to align with the latest trends while maintaining the true character of the stone, with grey tones and marble veins to highlight the structure.



Smeg hob

The **dark matte tones in any type of material** (leather, wood, etc) produce interesting contrasts that highlight the intense brilliance of **Dekton® Stonika Taga**.

The **golden, earthy and white elements** are ideal for creating a contemporary and elegant design.

Style
Traditional



Dekton
Stonika
TAGA



*Roller in wood and marble
by Normann Copenhagen*

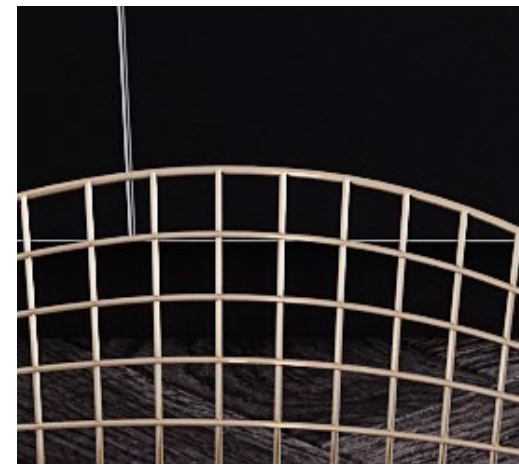
Dekton® Stonika

OLIMPO

Dekton® Stonika Olimpo takes inspiration from the very best Carrara marble for the most discerning customer. Dramatic, elegant veining against a soft white background is accented by its dazzling shine.



*Biba Albany Gold Lamp
by House of Fraser*



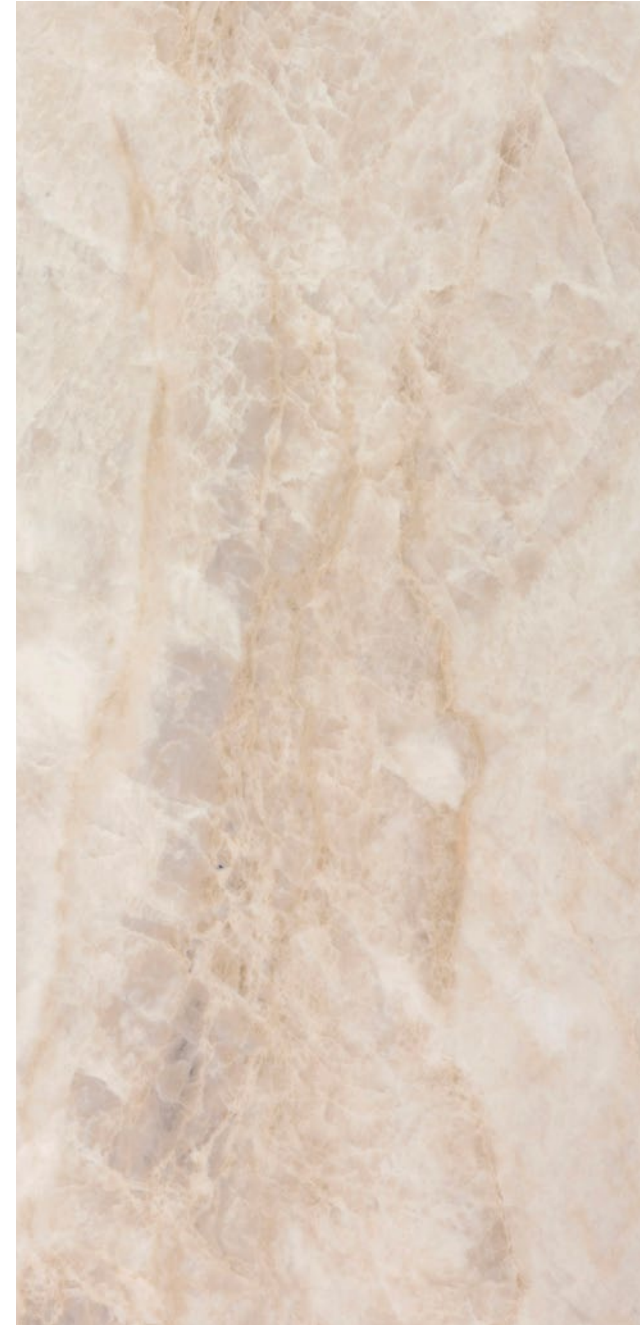
They greyish streaks of **Dekton® Stonika Olimpo** perfectly combine with **golden, metallic and wood elements** like **natural oak, and cementitious surfaces** like **Dekton® Soke** in the Industrial Series.

Styles
**Modern / Industrial
Scandinavian**



Dekton
Stonika
OLIMPO

Dekton® Stonika Arga creates a striking colour balance with **low saturated tones and golden details.**



Gray Armchair by Zara Home



Twisted metal lantern by Zara Home



Dekton® Stonika

ARGA

Dekton® Stonika Arga embraces the iconic texture and soft warmth of Taj Mahal quartzite. The soft, creamy background with subtle veins intensifies its dramatic structure.



Dekton
Stonika
ARGA

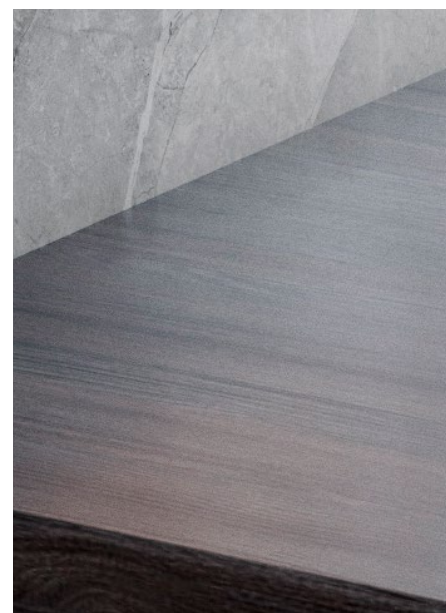


Silver and gold bottle opener
by Normann Copenhagen

Dekton® Stonika

SOGNE

Dekton® Stonika Sogne captures the distinctive, weathered beauty of Grey Pulpis natural stone. With a texture that blends natural stone and aged concrete, it evokes an industrial aesthetic with the juxtaposition of its ultra-glossy shine.



Metallic and neutral surfaces combined with any type of wood balance out and highlight the **Dekton® Stonika Sogne**

Styles
Industrial / Modern

Shaker by
Normann Copenhagen



Dekton® Stonika **SOGNE**



Dekton
Stonika
SOGNE

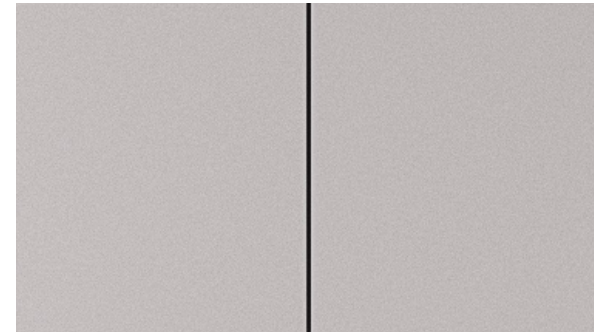
The **beige, earthy and ochre tones** in all their chromatic glory create the perfect setting for the **Dekton® Stonika Korso** to bask in its own beauty.

Styles
Industrial / Traditional / Modern

Dekton® Stonika **KORSO**



*Le Cocktail Velvet Twin
by Oliver Bonas*



*Clap armchair by
Patricia Urquiola*



Dekton® Stonika

KORSO

Dekton® Stonika Korso embodies the same texture as Dekton® Stonika Sogne, but with warm, luxurious earth tones. Grey veins coupled with its intense base makes a stunning statement.



*Krenit Bowl by Normann
Copenhagen*

 Hyperrealist Design

Dekton
Stonika
KORSO

Dekton® Stonika
prices

GROUP 3

SOGNE

KORSO

GROUP 4

OLIMPO

BERGEN

TAGA

ARGA

